

Have your file in CMYK Color Mode.

To perform this task, go to: IMAGE>MODE>then check CMYK



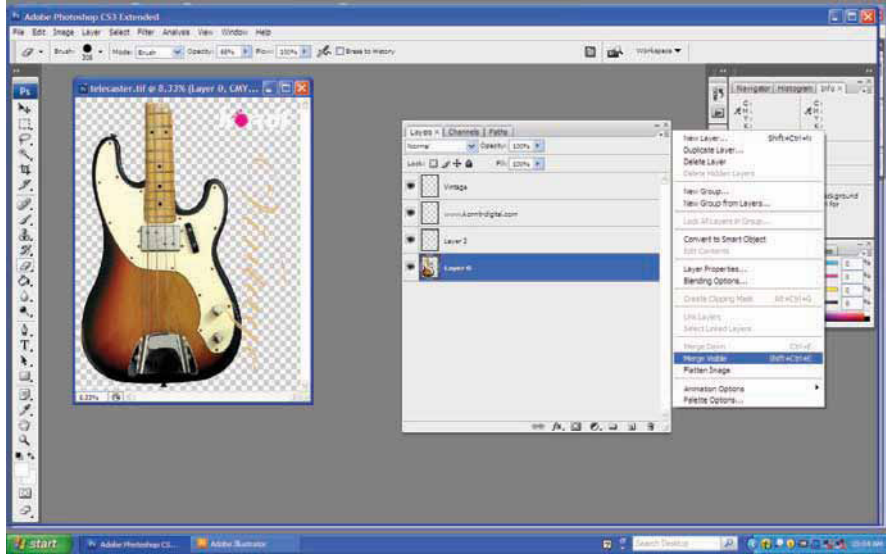
Your file will need to be 300 dpi at your desired image size.

To perform this task, go to: IMAGE>IMAGE SIZE> then make your adjustment



Your art will need to be on a single transparent layer.

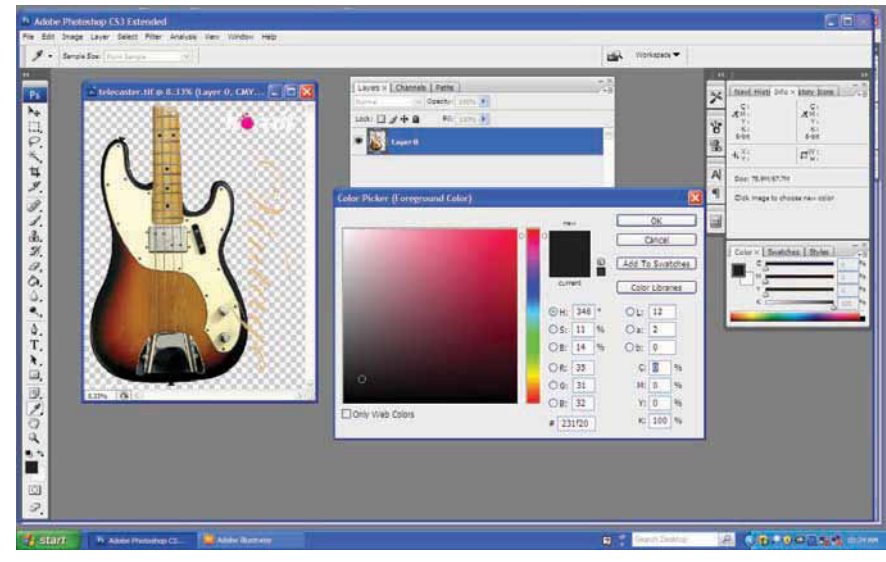
To perform this task: Delete any "for position only" background color. Rasterize any type layers. Merge visible layers. The end result should be a single layer with a grey and white checked background.



BY PASS THIS PAGE if your design is going to be on WHITE GARMENTS.

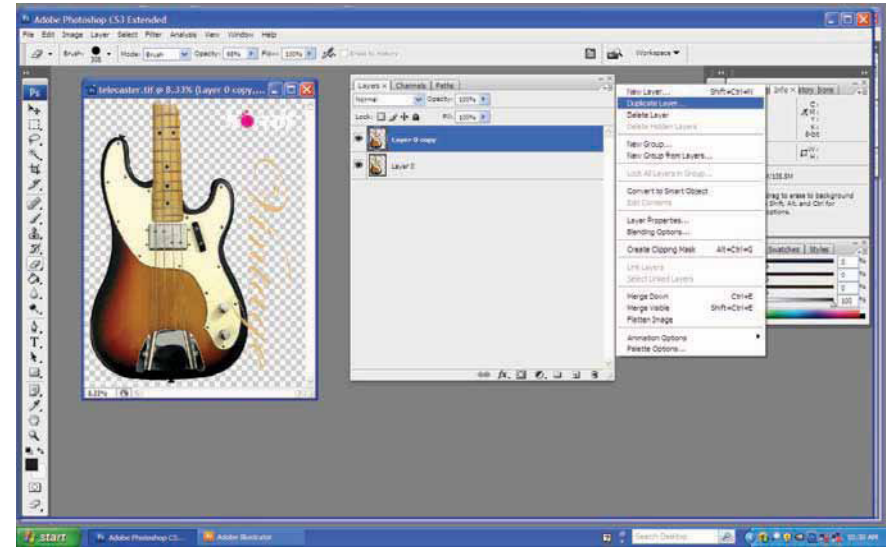
Set you foreground color to black, and your background color to white.

To perform this task: Double click on the foreground color swatch (this brings up the color picker) at the cmyk variable fields enter - C:0, M:0, Y:0, K:100. Do the same for the white swatch leaving all colors as ZERO.



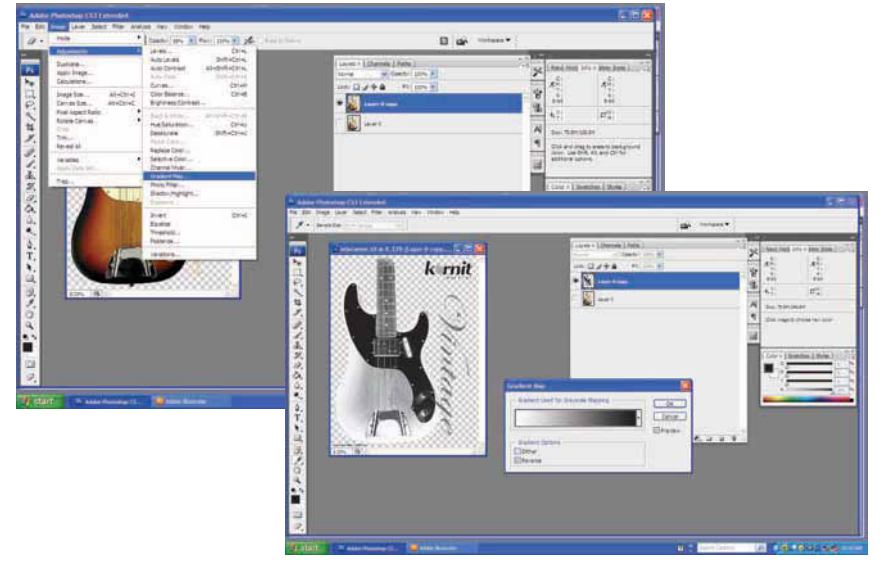
Duplicate your art layer.

To perform this task: Highlight your art layer. Click on the small option arrow on the layers pallet. The second option down is duplicate layer. Once finished turn off your original art layer, and highlight the copy.



Use the Gradient Map tool to help generate your white under base.

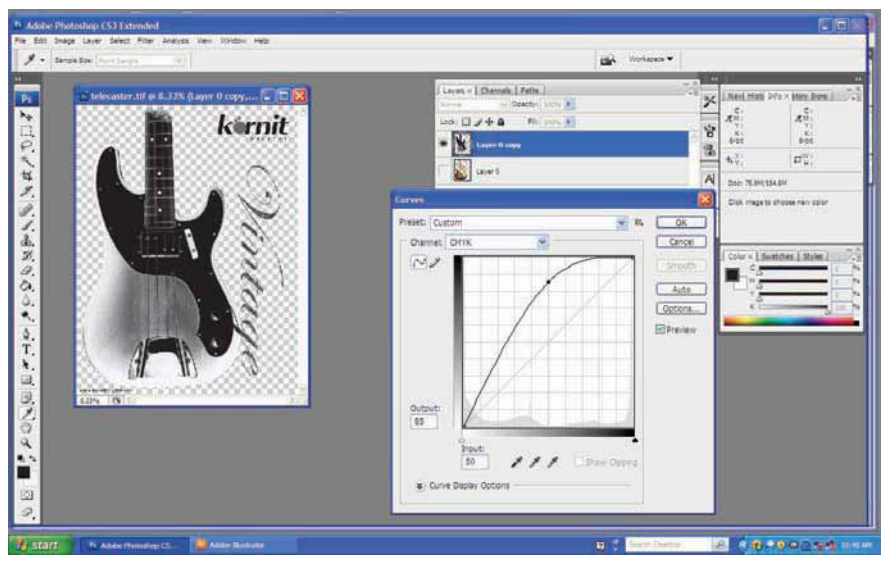
To perform this task, go to: IMAGE>ADJUSTMENTS>GRADIENT MAP. Once inside the new window, activate the reverse check box, and appear to be a black and white negative of your art.



BY PASS THIS PAGE if your design is going to be on WHITE GARMENTS.

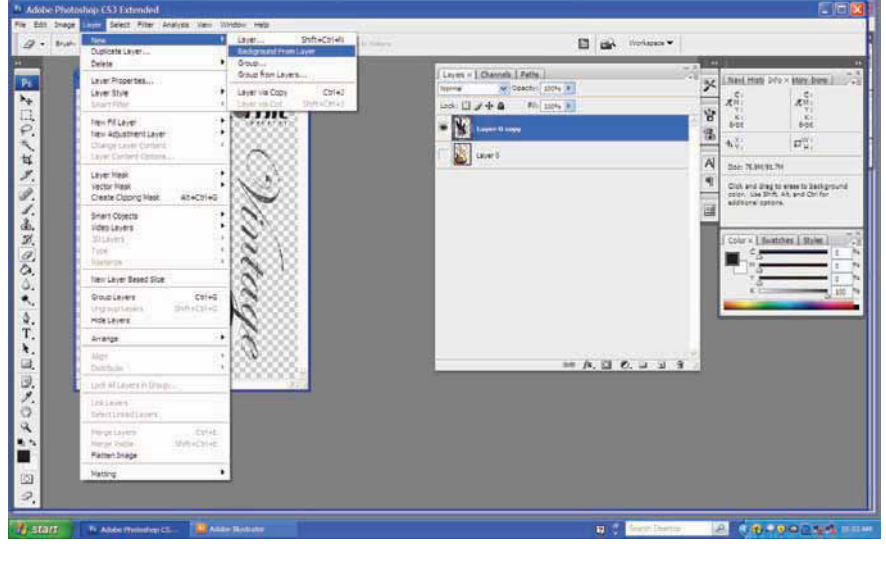
Perform a mid tone curve bump.

To perform this task, go to: IMAGE>ADJUSTMENTS>CURVES. Then plot a point about half way up your curve, and drag that point up. You are going to have an input of 50% and an output with a range between 70% and 85% depending on your preferences.



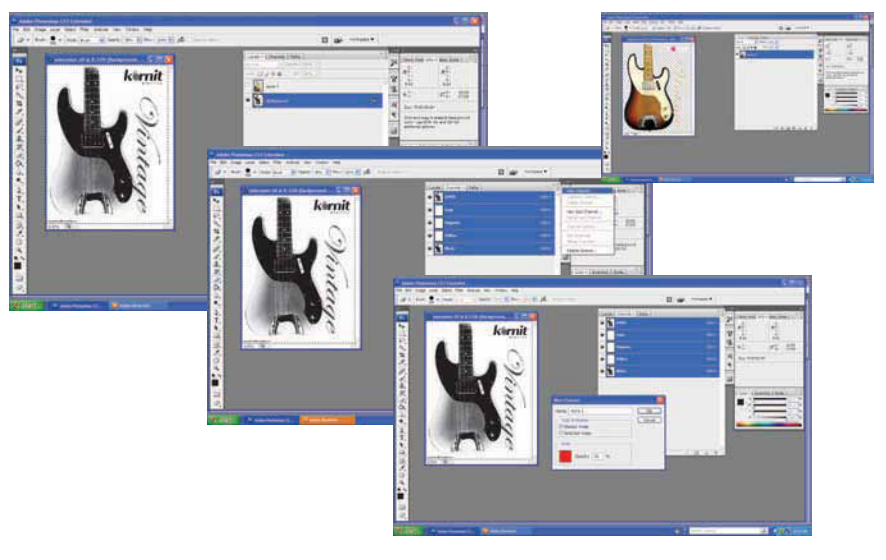
Convert this B&W image into a background layer.

To perform this task, go to: LAYER>NEW>BACKGROUND FROM LAYER.



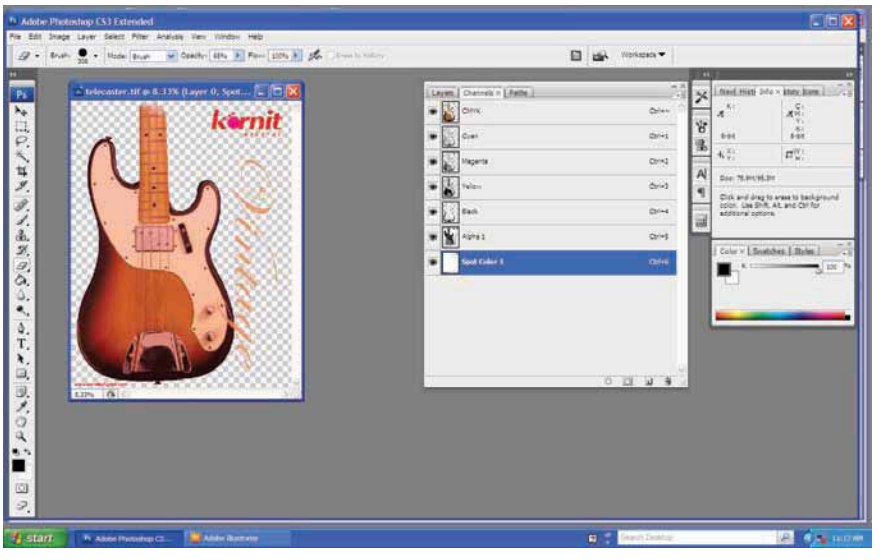
Copy the data from your new background and paste it into a new alpha channel.

To perform this task: Select All (Ctrl-A), Copy (Ctrl-C). Then click on the channels tab, and then the small options arrow on that menu. Choose "new channel" and then paste (Ctrl-V) your data in. Once finished go back to your layers and delete the background layer, and reactivate the original art layer.



Correct the channel order

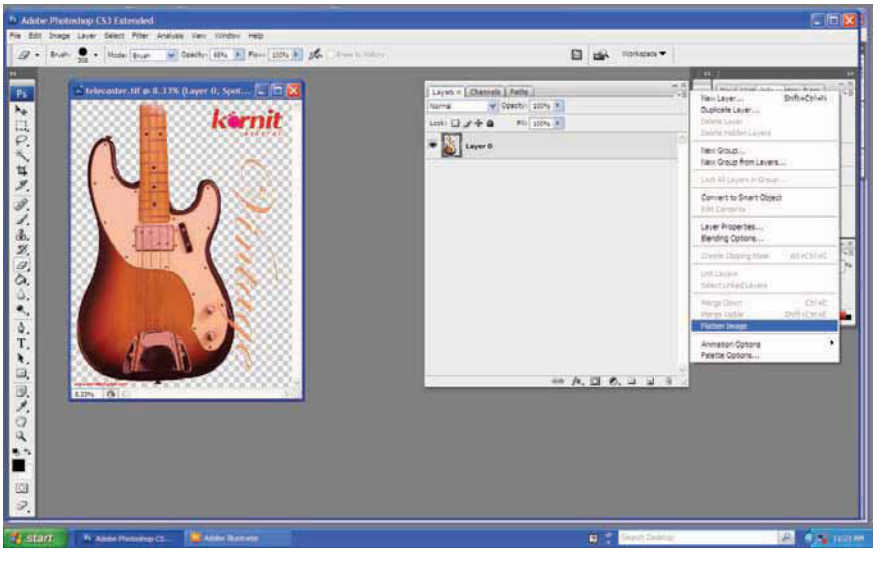
To perform this task: Click and drag the spot channel to the bottom of the list. The order should read:
CMYK
Cyan
Magenta
Yellow
Black
Alpha



You do NOT need ALPHA and SPOT channels for WHITE GARMENTS

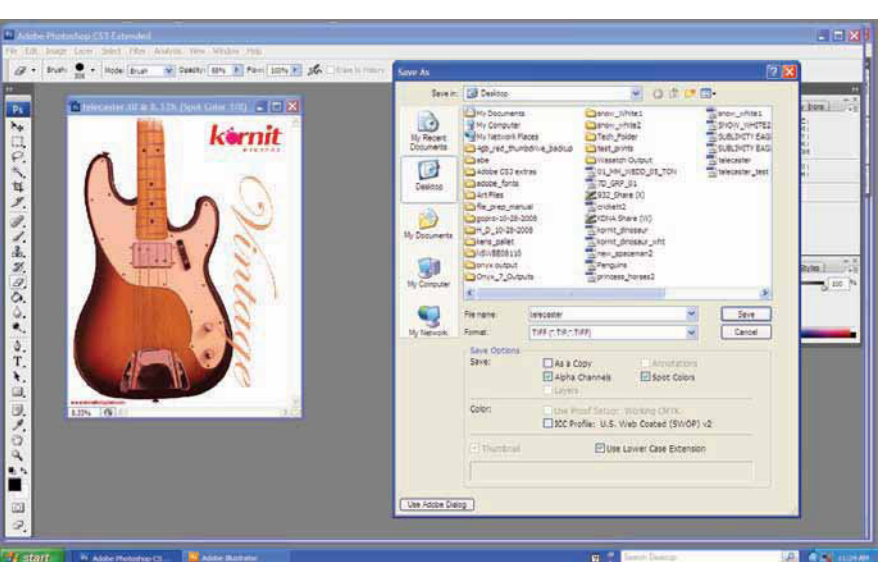
Flatten your image

To perform this task: Return to the layers pallet. Choose the small options arrow on the right, and select flatten image.



Save your file.

To perform this task: FILE>SAVE AS. Name your file as you choose. Make sure to have ALPHA CHANNELS and SPOT COLORS chosen. Turn OFF the ICC Profile.



You do NOT need SPOT COLORS for WHITE GARMENTS